

**IVS-Professional 4.5**

**IVS-PowerPoint 1.6**

**IVS-City Council 2.0**

**Supplement connecting 19" Base Station through TCP/IP**



# Contents

- Contents ..... 3**
- Connecting the RF-II Base Station to the network..... 4**
  - Connecting the RF-II Base Station..... 4
  - Determining the IP-address of the RF-II Base Station..... 5
  - Linking the RF-II Base Station to a serial port..... 6
  - Initializing the RF-II Base Station ..... 6

# Connecting the RF-II Base Station to the network

The 19" version of the RF-II Base Station is equipped with both a USB connection and a network connection. With these connections you can either connect the RF-II Base Station to one of the USB ports of your computer, or you can connect it to a network. Make sure that you are not using both connections at the same time. When the RF-II Base Station is connected using the USB connection, the network connection will not function properly.

This document describes how the RF-II Base Station has to be connected to the network and how the IVS software needs to be set up to make use of the RF-II Base Station over the network.

To connect the RF-II Base Station using the USB connection, please refer to the 'Supplement connecting USB RF-II Base Station' document.

## Connecting the RF-II Base Station

The front panel of the RF-II Base Station has an RJ-45 connection, with which you can connect the RF-II Base Station to the network. To connect the RF-II Base Station directly to your computer you have to use a crosslink cable.

Once the RF-II Base Station is connected to the network, it will start looking for a DHCP server. If it can find one, the RF-II Base Station will be assigned an IP address from the DHCP server. For more information, please contact your network administrator.

If a DHCP server cannot be found, the RF-II Base Station will automatically assign itself an Auto-IP address. This IP address will always be in the range 169.254.0.1 to 169.254.255.1. The RF-II Base Station will make sure that the Auto-IP address is unique in the network, so that there will be no conflicts. Make sure that your computer also gets an Auto-IP address. If your computer uses a fixed IP address, it will not be able to find the RF-II Base Station. That's why you have to set up your computer to automatically obtain an IP-address.

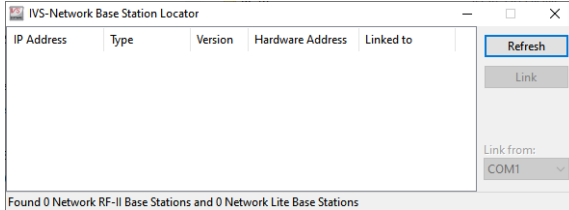
**Note:** Only start your computer after having connected the network cable. If your computer was already started, or if you needed to change the network settings to automatically obtain an IP address, please restart it.

If your computer didn't detect a network cable during start-up, it won't get assigned an IP address. You will be able to detect the Base Station, but you won't be able to connect to it.

# Determining the IP-address of the RF-II Base Station

Before the IVS software can connect to the RF-II Base Station, you have to indicate on which IP address the RF-II Base Station can be found. To determine this IP address, you use the 'IVS-Network Base Station Locator' application. This application is installed together with the communication plug-in. You find this application in the Start Menu, under **IVS**.

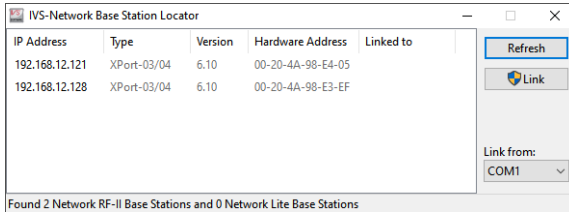
**The Base Station Locator detects all Base Stations in your network**



The Base Station Locator detects all RF-II Base Stations that are connected to your network. Information of all the RF-II Base Stations found is displayed in the list.

**Note:** After the RF-II Base Station has been switched on, it can take up to 20 seconds before it can be detected. If the RF-II Base Station cannot be immediately detected, please wait a few seconds and then click the **Search** button.

**Two RF-II Base Stations were detected on the network**



**IP address:** The IP-address of the RF-II Base Station.

**Type:** The type of the network connection of the RF-II Base Station. At this moment only the XPort-03/04 is used.

**Version:** The version number of the firmware that controls the network part of the RF-II Base Station.

**Hardware Address:** The hardware address of the RF-II Base Station. This is a unique address for each device that can be connected to a network. The hardware address of the RF-II Base Station is also indicated on a label on the back of the RF-II Base Station.

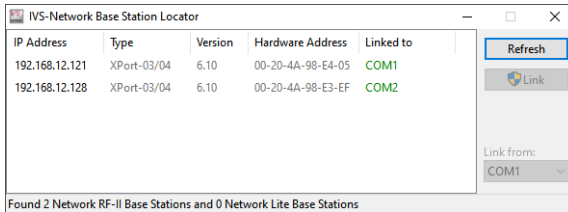
**Linked to:** The serial port this RF-II Base Station is currently linked to.

## Linking the RF-II Base Station to a serial port

The current version of the IVS software can only initialize an RF-II Base Station when it is connected to a serial port. To use an RF-II Base Station that is connected over a network, the IP address of the RF-II Base Station must be linked to a serial port. This link is only necessary to be able to select the RF-II Base Station in the IVS software. The serial port is not actually used for communicating with the RF-II Base Station.

To link an RF-II Base Station to a serial port, you click the **Link** button in the IVS-Network Base Station Locator. Behind each RF-II Base Station, the serial port this Base Station is linked to will be displayed.

**Both RF-II Base Stations are linked to a serial port**



The Base Station Locator starts with the given serial port and then numbers them consecutively. Serial ports that are not physically available on your computer, are automatically added by the IVS-Network Base Station Locator. These virtual serial ports are also automatically removed when the computer is rebooted.

When all the RF-II Base Stations that were found are successfully linked to a serial port, you can close the IVS-Network Base Station Locator.

## Initializing the RF-II Base Station

After linking the RF-II Base Station to a serial port, you can use it in the IVS software. To do this, you open the Communication Settings, by selecting the **Settings** option in the **Communication** menu.

**Choose the  
Network RF-II  
Base Station  
option**

Communication Settings

**Which clusters do you want to initialize?**  
Select the clusters that you want to use. You can use a maximum of 2 clusters, each connected to its own serial port.

COM1: Network RF-II Base Station

COM2: Network RF-II Base Station

< Back   Next >   Cancel

Choose the 'Network RF-II Base Station' as the cluster type. You follow the rest of the settings like you would for a normal RF-II Base Station. You select a channel, initialize the RF-II Base Station and then you initialize the keypads.

