

**IVS-Professional 4.5**

**IVS-PowerPoint 1.6**

**IVS-City Council 2.0**

**Supplement connecting USB RF-II Base Station**



# Contents

- Contents ..... 3**
- Connecting the RF-II Base Station to the USB port ..... 4**
- Using the preinstalled drivers..... 5**
  - Windows 7, Windows Server 2008 R2, Windows 8, Windows Server 2012 (R2), Windows 8.1, Windows 10, Windows Server 2016 and Windows Server 2019 ..... 5
- Installing the drivers from the thumb drive ..... 7**
  - Windows 7 ..... 7
  - Windows Server 2008 R2 ..... 16
  - Windows 8 ..... 17
  - Windows Server 2012 ..... 19
  - Windows 8.1 ..... 19
  - Windows Server 2012 R2 ..... 21
  - Windows 10 ..... 21
  - Windows Server 2016 and Windows Server 2019 ..... 23

# Connecting the RF-II Base Station to the USB port

The latest version of the RF-II Base Station is equipped with a USB connection. This allows you to connect the RF-II Base Station to a USB port of your computer. This USB connection is only used to communicate with the Base Station. To power the Base Station, you must use the supplied external power supply.

After connecting the RF-II Base Station to the USB port of your computer for the first time, you need to install the provided driver. This driver installs an additional serial port on your computer. This allows you to use a RF-II Base Station on computers that don't have a serial port of their own, like most of the new laptops.

When installing the IVS-Professional, IVS-PowerPoint or IVS-City Council software, the necessary drivers are preinstalled on your computer. If you then connect an RF-II Base Station, Windows will automatically find these preinstalled drivers and install them for the connected RF-II Base Station. This installation will almost be fully automatic.

If you connect the RF-II Base Station before having installed the software, you will have to install the necessary drivers from the installation thumb drive. The way the drivers need to be installed differs per version of Windows.

# Using the preinstalled drivers

During the installation of IVS-Professional, IVS-PowerPoint or IVS-City Council, the drivers for the RF-II Base Station are preinstalled on your computer. After connecting an RF-II Base Station, Windows will automatically find these preinstalled drivers and install them for the connected RF-II Base Station. It is no longer necessary to keep the installation thumb drive ready.

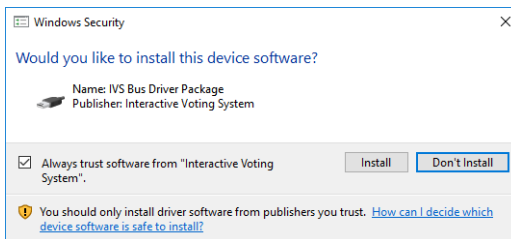
The drivers are compatible with Windows 7 and higher. Older operating systems are not supported.

**Please note:** The drivers are compatible with Windows 7, but only if update KB3033929 was installed, that was released by Microsoft in March, 2015. If your computer receives automatic updates, this update has been installed for sure. If, however, your computer is not connected to the internet, and hasn't received updates for some time, please make sure that you have at least installed this particular update. Without this update, the drivers cannot be installed on Windows 7.

## Windows 7, Windows Server 2008 R2, Windows 8, Windows Server 2012 (R2), Windows 8.1, Windows 10, Windows Server 2016 and Windows Server 2019

Windows 7, Windows Server 2008 R2, Windows 8, Windows Server 2012, Windows 8.1, Windows Server 2012 R2, Windows 10, Windows Server 2016 and Windows Server 2019 notify you of the fact that the driver was published by a publisher that isn't trusted yet. During the installation of the IVS software, you will be notified twice. Your permission is required to continue with the installation.

The publisher of this driver is not yet trusted



Click on the **Install** button to continue with the installation of the drivers. If you click on the **Don't Install** button, then the driver will not be installed and the installation of the software will be cancelled.

You can check the **Always trust software from "Interactive Voting System bv"** checkbox, so that Windows knows that this publisher can be trusted and it doesn't need to display this warning

again. During the remaining part of the installation, and even while connecting the RF-II Base Station, you won't be notified anymore. On Windows 8.1 and higher and Windows Server 2012 R2 and higher, this checkbox is already checked by default.

If you don't check the **Always trust software from "Interactive Voting System bv"** checkbox, you will be asked for your permission again. It is important that you click the **Install** button in both cases. If you were to do this only once, the installation of the software will be cancelled.

### **Connecting the RF-II Base Station**

When you connect the RF-II Base Station, Windows will automatically install the pre-installed drivers for this RF-II Base Station. It will not ask you for your permission anymore.

# Installing the drivers from the thumb drive

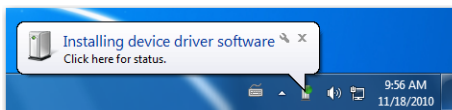
The drivers for the RF-II Base Station are on the thumb drive that came with the system. The installation instructions differ for each version of Windows. Please follow the instructions below for your version of Windows.

## Windows 7

The RF-II Base Station has to be connected to the USB port of your computer. Always use the USB cable that comes with the system. Connect the RF-II Base Station to the mains with the adaptor that comes with the system.

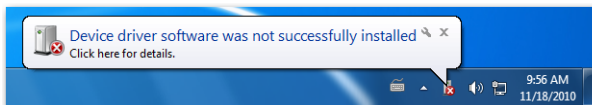
When connected to the mains, the red LED in the front of the RF-II Base Station is burning. Windows notifies you that it is going to install the device driver software.

**Windows is going to install the device driver software**



Windows will now automatically check with Windows Update to see if device driver software is available for this device. The drivers for the RF-II Base Station, however, are not available via Windows Update. Next, Windows will check to see if the device driver software is preinstalled. If this turns out to not be the case, Windows notifies you that the device driver software could not be installed.

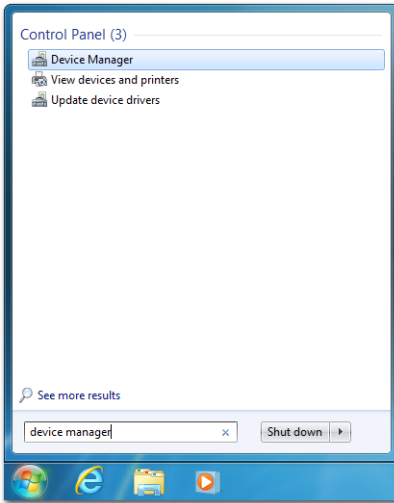
**The device driver software could not be installed**



Windows 7 does not automatically search for drivers on a thumb drive, even though this thumb drive had already been inserted into a USB port. You will have to install the device drivers manually.

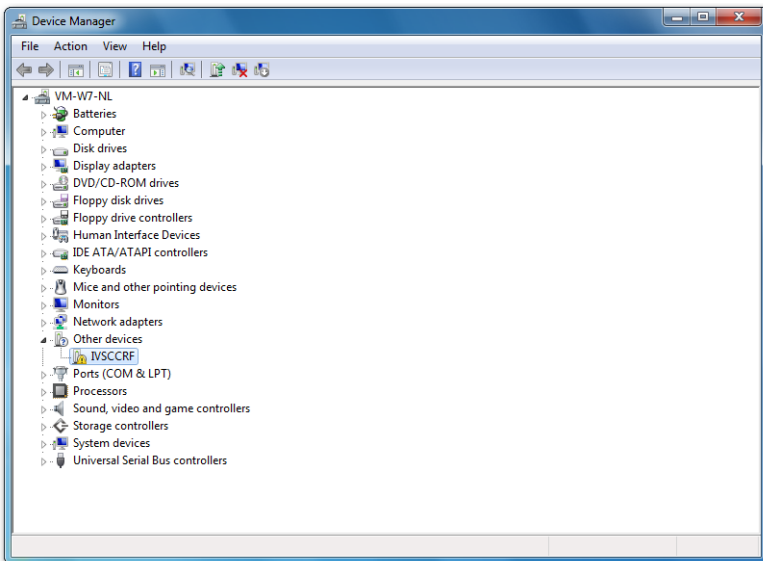
Click on the Windows Start button and type 'Device Manager' in the *Search programs and files* edit box.

**Starting the device manager**



Click on **Device Manager** to open the Device Manager window.

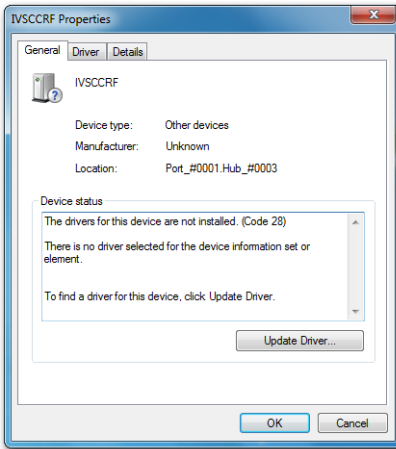
**Device Manager**



Under the *Other devices* category you see a device called IVSCCRF. This is the RF-II Base Station for which no device driver software has been installed. To install the device drivers, you double click on the IVSCCRF device. A window with the properties of this device is opened.

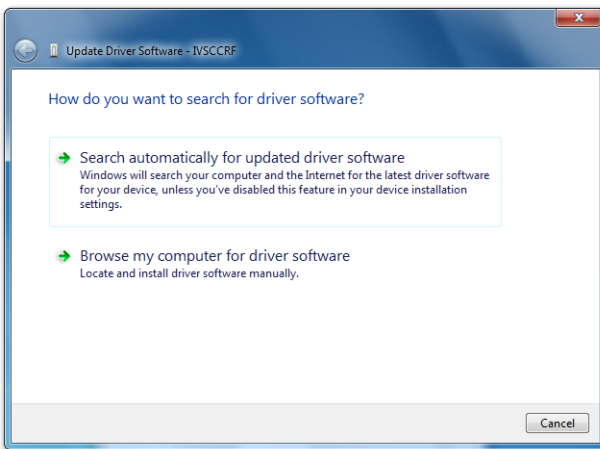


**The properties of the IVSCCRF device**



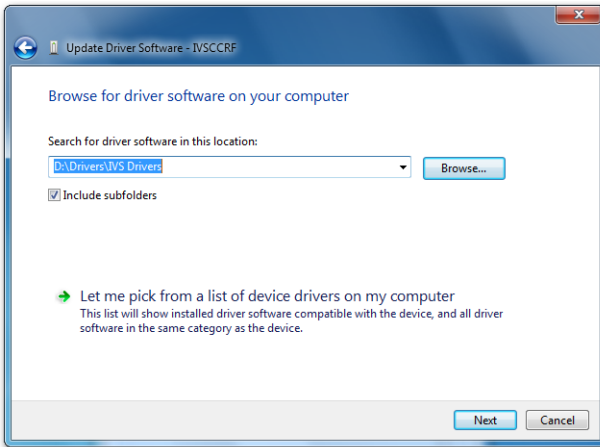
To install the device driver software for this device, you click on the **Update Driver...** button. A new window opens to ask you how you want to search for this driver.

**How do you want to search for driver software**



Click on the **Browse my computer for driver software** button to manually indicate where the drivers can be found. If you were to click on the **Search automatically for updated driver software** button, Windows would again check with Windows Update to see if driver software is available, or check for preinstalled drivers. This would again lead to a notification that Windows was unable to install the driver software.

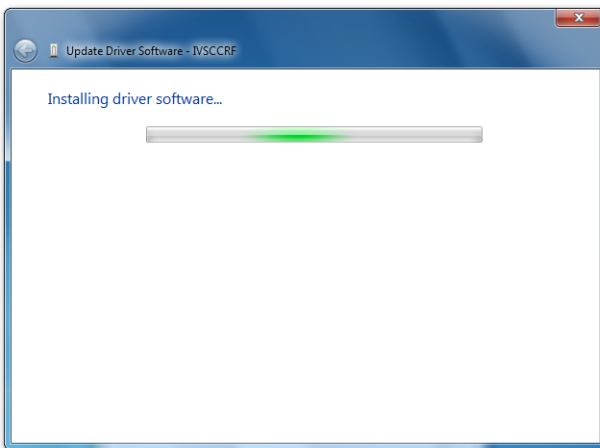
Indicate the location where the driver software can be found



The driver for the RF-II Base Station is on the thumb drive that came with the system. Make sure that the thumb drive is connected to one of the computer's USB ports. Next, click on the **Browse...** button to indicate the location where the driver software can be found. They can be found in the IVS Drivers folder, which is in the Drivers folder on the thumb drive.

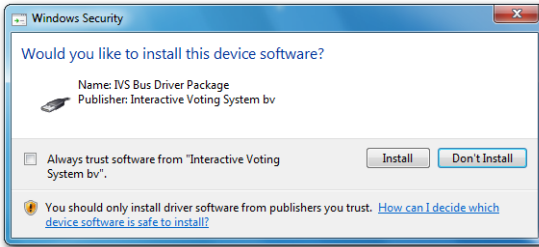
After having indicated the location, you click on **Next** to continue. Windows will now install the driver software.

The driver software is being installed



The driver was published by *Interactive Voting System bv*. Because this publisher is not yet trusted by Windows, a warning is displayed asking you if you are sure you want to install this driver.

The publisher of this driver is not yet trusted

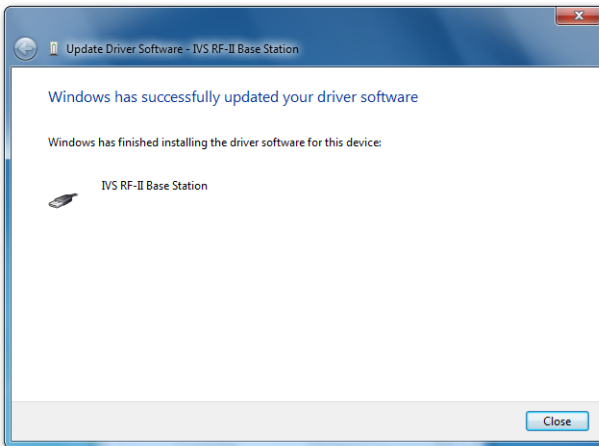


You can check the **Always trust software from "Interactive Voting System bv"**. checkbox, so that Windows knows that this publisher can be trusted and it doesn't need to display this warning again.

**Please note:** due to a bug in Windows 7, this warning will be displayed again, even if you check the **Always trust software from "Interactive Voting System bv"**. checkbox. Microsoft is aware of this bug and released an update for Windows 7. This update, called KB2921916, is available from Microsoft upon request.

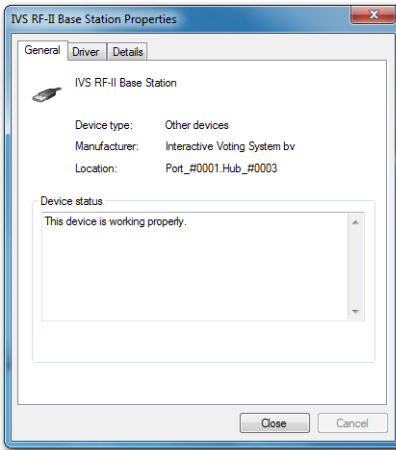
Click on **Install** to continue. Windows will continue with the installation of the drivers. When Windows has finished installing, it will tell you that the software for the device has been successfully installed.

The installation of the driver was successful



Click on the **Close** button to close the wizard. In the IVS RF-II Base Station properties window you can see that the device is now working properly.

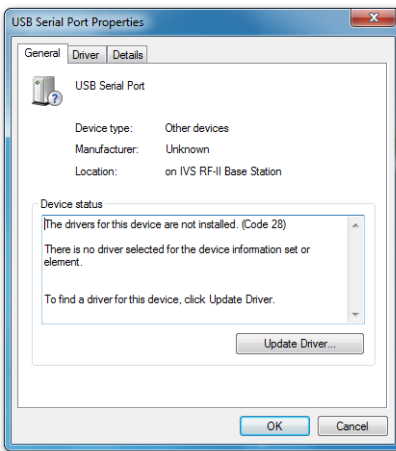
The device is now working properly, after the installation of the driver software



Click on **Close** to close this window. In the meantime, Windows has notified you that it found another device, and that the device driver software for this device also failed to install.

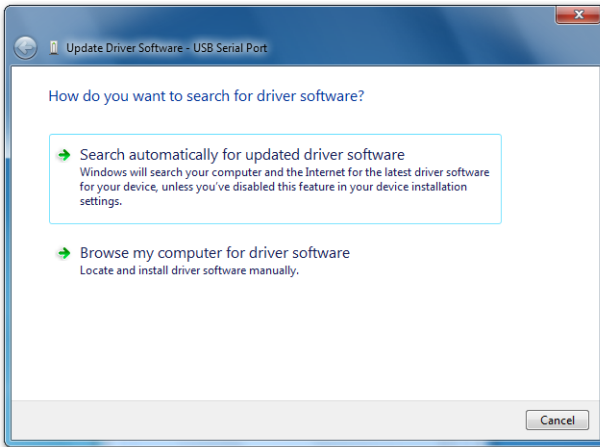
If you look at the Device Manager window, you can see that another device called "USB Serial Port" appeared under the *Other devices* category. The device drivers for this device also need to be installed manually. To do this, you double-click on the "USB Serial Port" device, after which a window with the properties of this devices opens up.

The properties of the "USB Serial Port" device



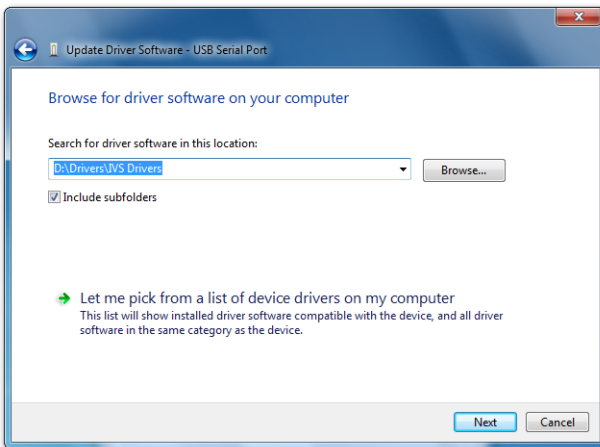
To install the device driver software for this device, you click on the **Update Driver...** button. Again, a new window opens to ask you how you want to search for this driver.

**How do you want to search for driver software**



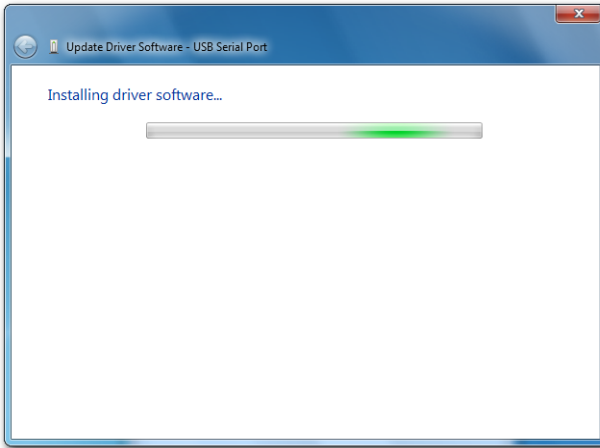
Click on the **Browse my computer for driver software** button to manually indicate where the drivers can be found. A new window opens up in which you can indicate the location of the driver. The last used location is already filled in.

**The location of the driver software is already filled in**



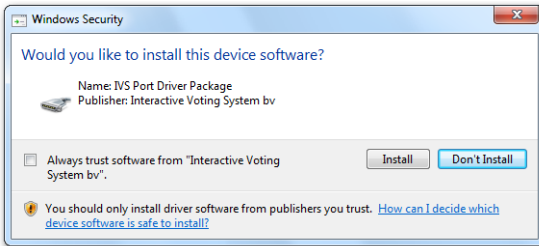
This is also the location where the device drivers for the USB Serial Port can be found. You now just click on the **Next** button to continue. Windows will now install the driver software.

The driver software is being installed



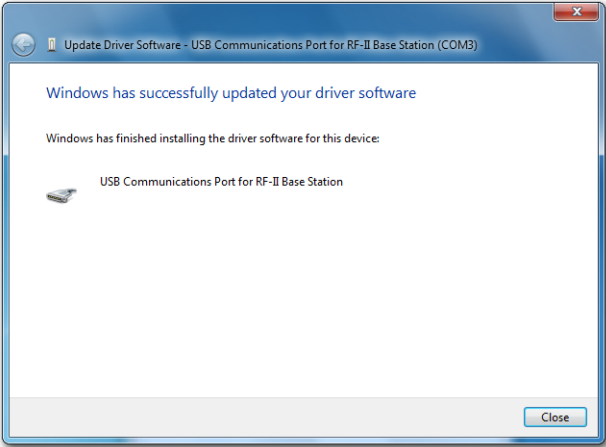
If you didn't indicate that you trust the publisher *Interactive Voting System bv*, or you didn't install update KB2921916, you will again receive a warning message telling you that the publisher of the driver is not yet trusted.

The publisher of this driver is not yet trusted



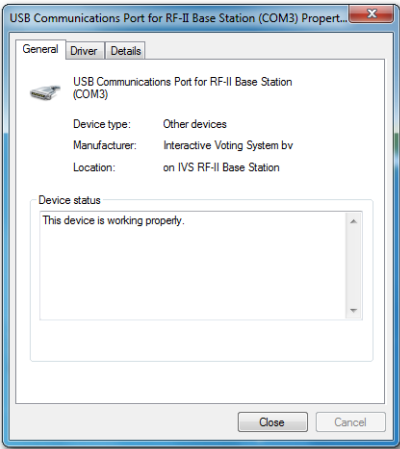
Click on **Install** to continue. Windows will continue with the installation of the drivers. When Windows has finished installing, it will tell you that the software for the device has been successfully installed.

The installation of the driver was successful



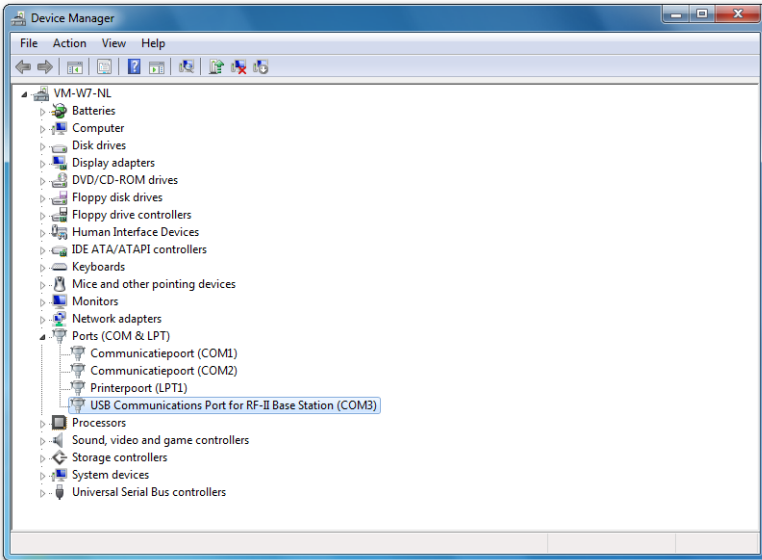
Click on the **Close** button to close the wizard. In the USB Communications Port for RF-II Base Station (COM3) properties window you can see that the device is now working properly.

The device is now working properly, after the installation of the driver software



Click on **Close** to close this window. If you look at the Device Manager window, you see that the device you just installed now appears under the *Ports (COM & LPT)* category, and is now called *USB Communications Port for RF-II Base Station (COM3)*. Behind the device name, the serial port on which your RF-II Base Station is installed, is indicated between brackets.

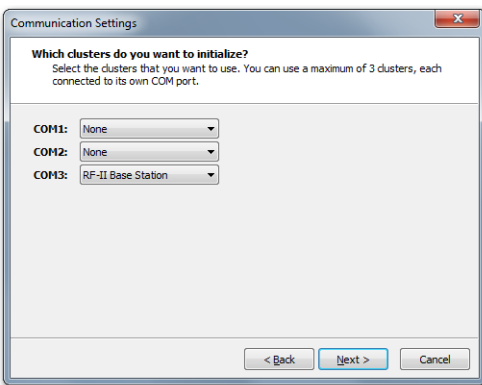
In the Device Manager you can see on which serial port your Base Station is installed



You can close the Device Manager by clicking on the red cross.

Start the IVS software and open the Communication Settings by selecting the option **Settings** from the **Communication** menu.

Selecting the RF-II Base Station in the IVS software



You can see that an extra serial port has been added, in this case COM3. The RF-II Base Station is connected to this serial port. Select *RF-II Base Station* on COM3 and click on **Next** to continue. You continue with the settings as described in the manual for the IVS software.

## Windows Server 2008 R2

If you have Windows Server 2008 R2, you follow the steps as described for Windows 7.

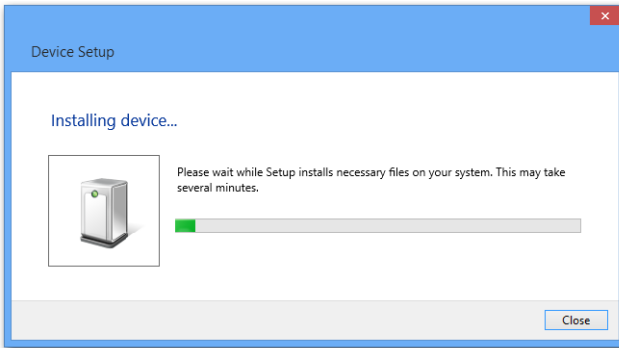


## Windows 8

The RF-II Base Station has to be connected to the USB port of your computer. Always use the USB cable that comes with the system. Connect the RF-II Base Station to the mains with the adaptor that comes with the system.

When connected to the mains, the red LED in the front of the RF-II Base Station is burning. When you are in the Windows 8 Start Screen, you won't see any notifications. When you are on the Windows 8 Desktop, you will see a button appear in the Windows taskbar that indicates the installation progress. If you click on this button, the Device Setup window appears.

**Windows is going to install a device driver**

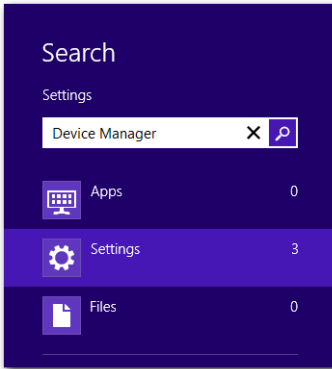


Windows will now automatically check with Windows Update to see if device driver software is available for this device. The drivers for the RF-II Base Station, however, are not available via Windows Update. Next, Windows will check to see if the device driver software is preinstalled. If this turns out to not be the case, the window will disappear. Windows does not notify you whether the installation was successful or not.

Windows 8 does not automatically search for drivers on a thumb drive, even though this thumb drive had already been inserted into a USB port. You will have to install the device drivers manually.

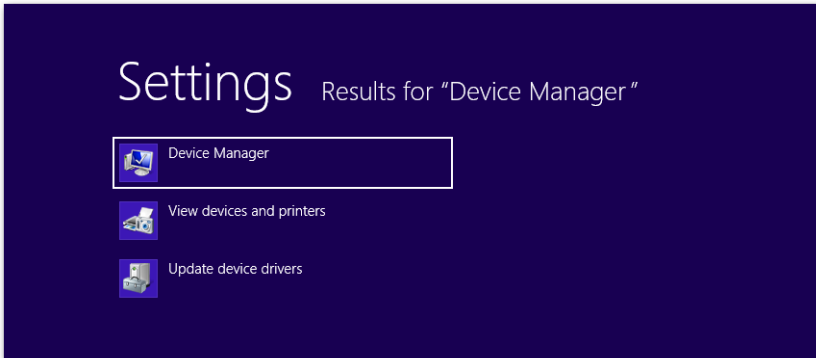
On the Start screen you type 'Device Manager'. A search window appears while you are typing.

The search window shows all locations containing the word 'Device Manager'



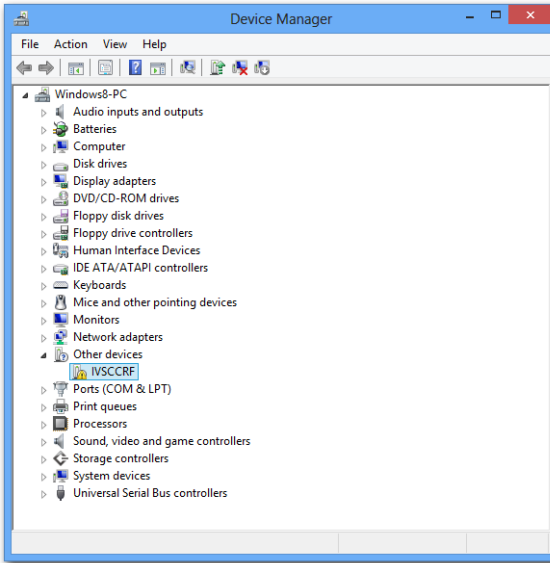
Click on **Settings**.

Starting the Device Manager



Next, at the top left corner, click on **Device Manager**. The Device Manager window appears.

## Device Manager



Under the *Other devices* category you see a device called IVSCCRF. This is the RF-II Base Station for which no device driver software has been installed. To install the device drivers, you double click on the IVSCCRF device. A window with the properties of this device is opened.

From here, you follow the steps as describes for Windows 7, starting on page 9.

## Windows Server 2012

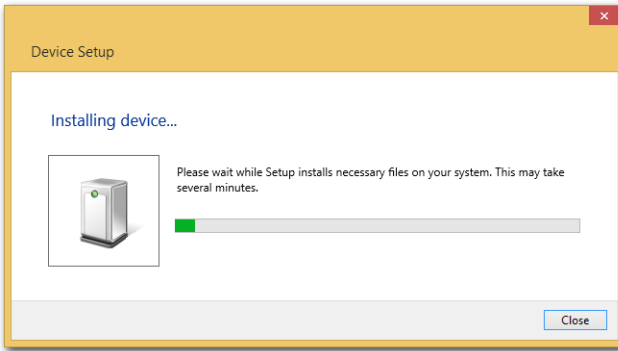
If you have Windows Server 2012, you follow the steps as described for Windows 8.

## Windows 8.1

The RF-II Base Station has to be connected to the USB port of your computer. Always use the USB cable that comes with the system. Connect the RF-II Base Station to the mains with the adaptor that comes with the system.

When connected to the mains, the red LED in the front of the RF-II Base Station is burning. When you are in the Windows 8 Start Screen, you won't see any notifications. When you are on the Windows 8 Desktop, you will see a button appear in the Windows taskbar that indicates the installation progress. If you click on this button, the Device Setup window appears.

**Windows is going to install a device driver**

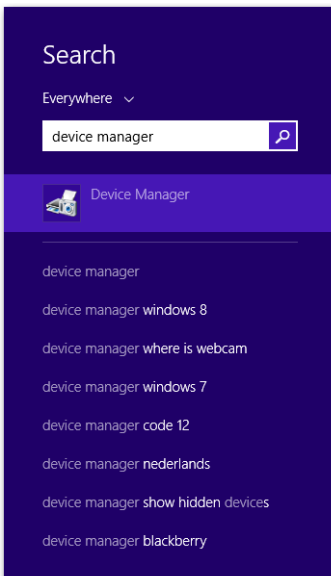


Windows will now automatically check with Windows Update to see if device driver software is available for this device. The drivers for the RF-II Base Station, however, are not available via Windows Update. Next, Windows will check to see if the device driver software is preinstalled. If this turns out to not be the case, the window will disappear. Windows does not notify you whether the installation was successful or not.

Windows 8.1 does not automatically search for drivers on a thumb drive, even though this thumb drive had already been inserted into a USB port. You will have to install the device drivers manually.

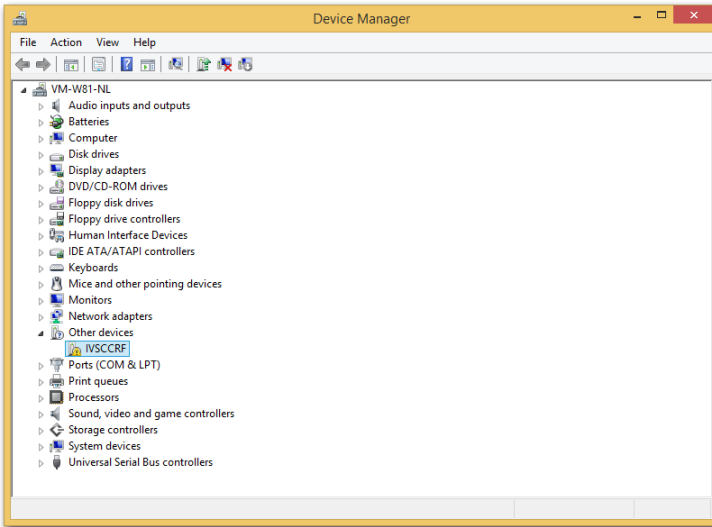
On the Start screen you type 'Device Manager'. A search window appears while you are typing.

**The search window shows all locations containing the word 'Device Manager'**



In the search window, click on **Device Manager**. The Device Manager window appears.

## Device Manager



Under the *Other devices* category you see a device called IVSCCRF. This is the RF-II Base Station for which no device driver software has been installed. To install the device drivers, you double click on the IVSCCRF device. A window with the properties of this device is opened.

From here, you follow the steps as describes for Windows 7, starting on page 9.

## Windows Server 2012 R2

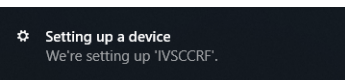
If you have Windows Server 2012 R2, you follow the steps as described for Windows 8.1.

## Windows 10

The RF-II Base Station has to be connected to the USB port of your computer. Always use the USB cable that comes with the system. Connect the RF-II Base Station to the mains with the adaptor that comes with the system.

When connected to the mains, the red LED in the front of the RF-II Base Station is burning. A notification appears, telling you that Windows is setting up the device.

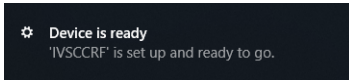
The device is being set up



Windows will now automatically check with Windows Update to see if device driver software is available for this device. The drivers for the RF-II Base Station, however, are not available via Windows Update. Next, Windows will check to see if the device driver software is preinstalled. Even

though this is not the case either, Windows will notify you that the device has been set up and is ready to use.

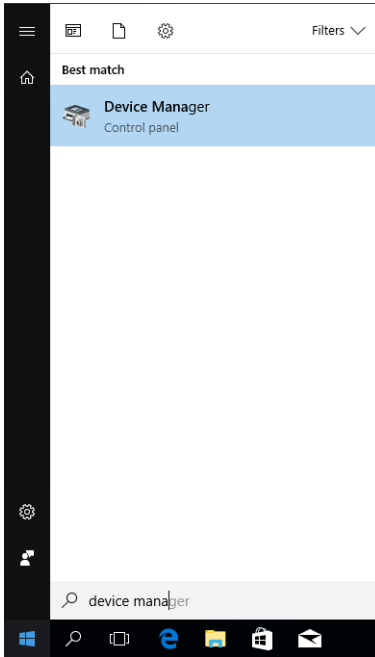
**The device is ready to use**



Windows 10 does not automatically search for drivers on a thumb drive, even though this thumb drive had already been inserted into a USB port. You will have to install the device drivers manually.

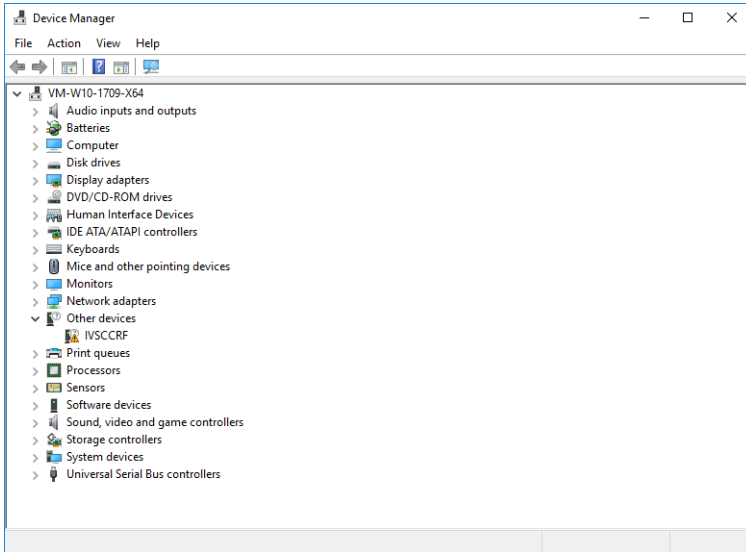
In the Start menu, you type 'Device Manager'. A search window appears while you are typing.

**Starting the Device Manager**



Click on **Device Manager**. The Device Manager window appears.

## Device Manager



Under the *Other devices* category you see a device called IVSCCRF. This is the RF-II Base Station for which no device driver software has been installed. To install the device drivers, you double click on the IVSCCRF device. A window with the properties of this device is opened.

From here, you follow the steps as describes for Windows 7, starting on page 9.

## Windows Server 2016 and Windows Server 2019

If you have Windows Server 2016 or Windows Server 2019, you follow the steps as described for Windows 10.

